



# 2009 Budget Document

---

**gwinnett**county

County Commission  
Charles E. **Bannister**, Chairman

Shirley Fanning **Lasseter**, District 1  
Bert **Nasuti**, District 2  
Mike **Beaudreau**, District 3  
Kevin **Kenerly**, District 4

75 Langley Drive  
Lawrenceville, GA 30046

**table of contents**

Title Page.....i  
 Table of Contents.....ii

**Introduction (Section I)**

Gwinnett County – Organizational Chart.....I-1  
 Gwinnett County – Department Directors and Elected Officials.....I-2  
 Gwinnett County – Financial Services/Budget Staff.....I-3  
 Gwinnett County – General Information.....I-4  
 Gwinnett County – Municipalities .....I-9

**Executive Summary (Section II)**

Director of Financial Services – Transmittal Letter.....II-1  
 Gwinnett County – Mission, Goals, Objectives.....II-4  
 Gwinnett County – Policies and Procedures.....II-6  
 Gwinnett County – Economic Environment.....II-11  
 Gwinnett County – Short-Range Issues.....II-13  
 Gwinnett County – Long-Range Issues .....II-16  
 Initial Operating Impact and Major Capital Projects .....II-23  
 Gwinnett County – Budget Process.....II-24  
 Gwinnett County – Budget Process Flow Chart.....II-27  
 Gwinnett County – Resolution Amounts.....II-28  
 Gwinnett County – Budget Resolution .....II-29  
 Gwinnett County – Fund Structure and Financial Status.....II-32  
 Operating and Capital Funds Combined – Revenues and Appropriations .....II-39  
 Gwinnett County – Debt Summary.....II-40  
 Gwinnett County – Authorized Position History .....II-45  
 General Fund – Tax Digest Values.....II-46  
 Tax-Related Funds – Real and Personal Property Tax Rates .....II-47

**Operating Funds – Definitions, Revenues, Expenditures, and Appropriations (Section III)**

Operating Funds – Revenue and Expenditures by Category.....III-1  
 Operating Funds – Revenue and Expenditures by Fund .....III-2  
 Operating Funds – Fund Balance Summaries .....III-4  
  
 Operating Tax-Related Funds.....III-7  
     General Fund.....III-10  
     General Fund – Departmental Expenditures.....III-11  
     Recreation Fund.....III-17  
     General Obligation Debt Service (G.O. Bond) Fund (1986 Issue) .....III-20  
     General Obligation Debt Service (G.O. Bond) Fund (Detention Center) .....III-23  
     Street Lighting Fund .....III-26  
     Speed Hump Fund .....III-28  
  
 Operating Enterprise Funds .....III-31  
     Water and Sewer Operating Fund .....III-34  
     Local Transit Operating Fund.....III-37  
     Stormwater Management Operating Fund.....III-40  
     Airport Operating Fund.....III-43  
     Solid Waste Operating Fund.....III-45

Operating Internal Service Funds.....	III-47
Group Self-Insurance Fund.....	III-50
Fleet Management Fund.....	III-52
Risk Management Fund.....	III-55
Vehicle Purchasing Fund.....	III-57
Workers' Compensation Fund.....	III-59
Auto Liability Fund.....	III-62
 Operating Special Use Funds.....	 III-64
E-911 Fund.....	III-67
Tourism Fund.....	III-70
Crime Victims Assistance Fund.....	III-72
Police Special Investigations Fund.....	III-74
Sheriff Inmate Store Fund.....	III-76
Corrections Inmate Welfare Fund.....	III-78
Sheriff Special Operations Fund.....	III-80
District Attorney Special Operations Fund.....	III-82
Stadium Operations Fund.....	III-84
Tourism Sustainability Fund.....	III-86
Tree Bank Fund.....	III-88

**Departmental Information – Missions, Org Charts, Issues, Goals, Performance Measures, and Budgets (Section IV)**

Clerk of Court .....	IV-1
Clerk of Recorder's Court.....	IV-3
Community Services.....	IV-5
Correctional Services.....	IV-9
County Administrator.....	IV-13
District Attorney.....	IV-15
Financial Services.....	IV-19
Fire and Emergency Services.....	IV-25
Human Resources.....	IV-29
Information Technology Services.....	IV-31
Judiciary.....	IV-33
Juvenile Court.....	IV-37
Law Department.....	IV-41
Planning and Development.....	IV-45
Police Services.....	IV-49
Probate Court.....	IV-53
Probation.....	IV-55
Recorder's Court Judges.....	IV-57
Sheriff's Department.....	IV-59
Solicitor's Office .....	IV-63
Support Services.....	IV-67
Tax Commissioner.....	IV-71
Transportation.....	IV-75
Water Resources.....	IV-79

**Capital Funds (Section V)**

Capital Funds Revenue and Expenditures by Category.....	V-1
Capital Funds Revenue and Expenditures by Fund.....	V-2
Capital Funds Fund Balance Summaries.....	V-3
Capital Funds Revenue and Appropriations by Fund.....	V-4

Capital Tax-Related Funds..... V-5  
     Capital Project Fund ..... V-8  
 Capital Enterprise Funds.....V-13  
     Airport Renewal and Extension Fund.....V-17  
     Solid Waste Renewal and Extension Fund.....V-18  
     Stormwater Renewal and Extension Fund.....V-19  
     Transit Renewal and Extension Fund.....V-20  
     Water and Sewer Renewal and Extension/Bond Funds Combined.....V-21  
 Capital Special Use Funds.....V-25  
     Special Purpose Local Option Sales Tax Fund (1997).....V-28  
     Special Purpose Local Option Sales Tax Fund (2001).....V-36  
     Special Purpose Local Option Sales Tax Fund (2005).....V-43  
     Special Purpose Local Option Sales Tax Fund (2009).....V-47

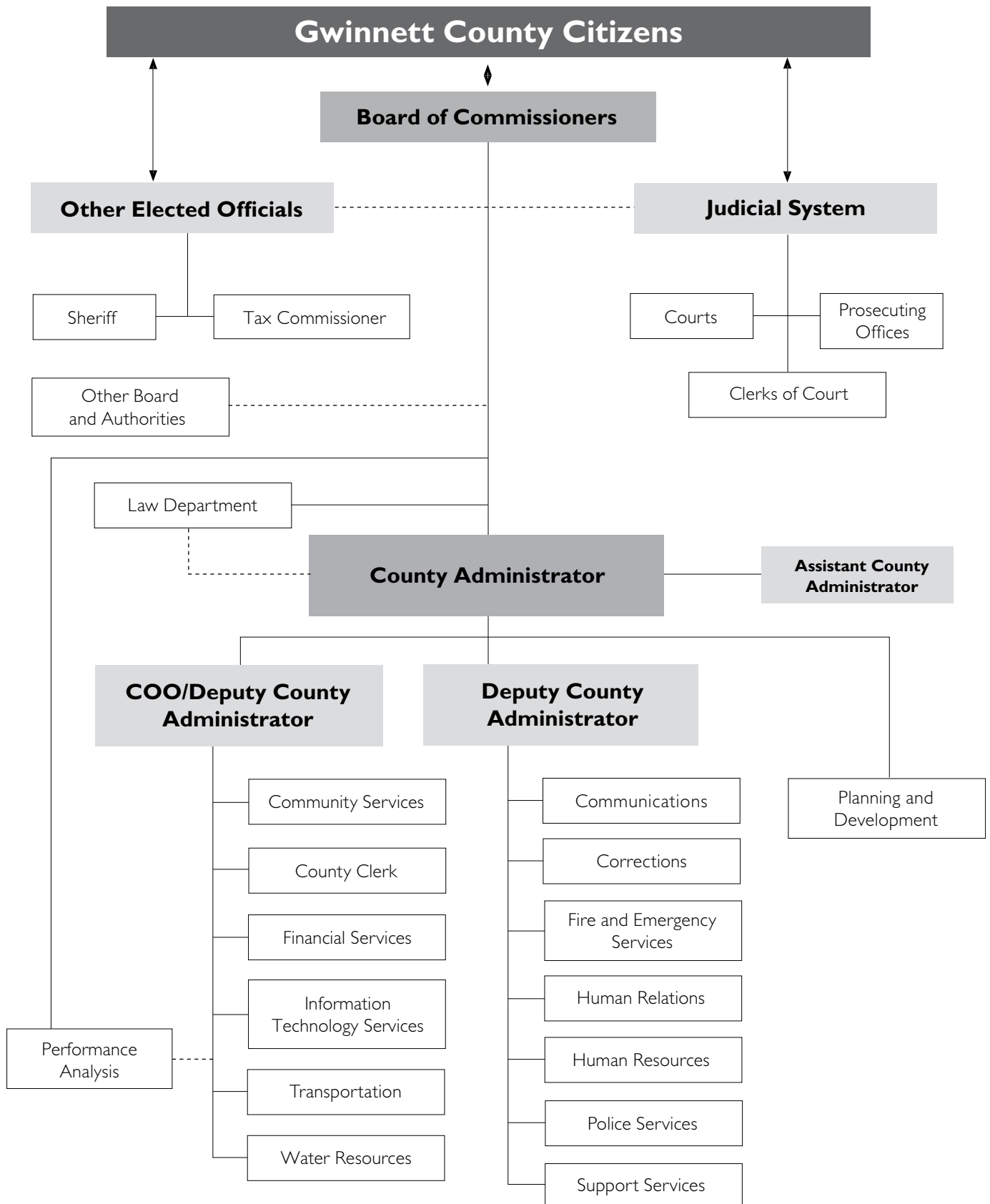
**Capital Program (Section VI)**

Community Services Capital Improvement Program.....VI-1  
 General Government Capital Improvement Program.....VI-5  
 Public Safety Capital Improvement Program.....VI-9  
 Transportation Capital Improvement Program.....VI-13  
 Water Resources Capital Improvement Program.....VI-23

**Appendix (Section VII)**

Budget Document – Glossary and Acronyms..... VII-1  
 Gwinnett County – Salary Range Structure .....VII-14  
 Gwinnett County – Authorities, Boards, and Committees.....VII-15  
 Gwinnett County – Statistical Information .....VII-16  
 Gwinnett County – Commission Districts.....VII-22

**GWINNETT COUNTY ORGANIZATIONAL CHART**



## Department Directors

County Administrator  
Jock A. **CConnell**

Deputy County Administrator, COO  
Michael D. **Comer**

Deputy County Administrator  
Susan **Lee**

Assistant County Administrator  
Lisa **Johnsa**

County Attorney  
Karen **Thomas**

Community Services  
Phil **Hoskins**, Director

Corrections  
David **Peek**, Warden

Financial Services  
Aaron J. **Bovos**, Director

Fire and Emergency Services  
Chief Steve **Rolader**

Human Resources  
Kenneth **Poe**, Director

Information Technology Services  
John **Matelski**, Director

Planning and Development  
Glenn **Stephens**, Director

Police Services  
Chief Charles M. **Walters**

Support Services  
Steve **North**, Director

Transportation  
Brian **Allen**, Director

Water Resources  
Lynn **Smarr**, Acting Director

## Elected Officials

Clerk of Court  
Tom **Lawler**

District Attorney  
Daniel J. **Porter**

Chief Magistrate Court Judge  
George F. **Hutchinson III**

Probate Court Judge  
Walter J. **Clarke Jr.**

Sheriff  
R.L. "Butch" **Conway**

Solicitor  
Rosanna **Szabo**

Tax Commissioner  
Katherine **L. Meyer**

State Court Judges  
Robert W. **Mock Sr.**, Chief Judge  
Pamela D. **South**  
Joseph C. **Iannazzone**  
Carla E. **Brown**  
Randolph G. **Rich**  
John F. **Doran Jr.**

Superior Court Judges  
K. Dawson **Jackson**, Chief Judge  
Michael C. **Clark**  
Melodie **Snell-Conner**  
Debra K. **Turner**  
William M. **Ray III**  
R. Timothy **Hamil**  
Ronnie K. **Batchelor**  
Thomas N. **Davis Jr.**  
Warren P. **Davis**  
Karen E. **Beyers**

## Judicially Appointed Officials

Juvenile Court Judges  
Robert V. **Rodatus**, Presiding Judge  
Stephen E. **Franzén**  
Phyllis **Miller**

Recorder's Court Judges  
Robert S. **Jones**, Chief Judge  
Michael **Greene**  
Patti **Muise**

Clerk of Recorder's Court  
Jeff C. **West**

Court Administrator  
Philip M. **Boudewyns**

## Department of Financial Services

Aaron J. **Bovos**  
Director

Maria **Woods**  
Deputy Director

Casey **Snyder**  
Deputy Director

Chuck **Huckleberry**  
Deputy Director

Jane **Osetkowski**  
Executive Assistant

### budget division

Chad **Teague**, Director  
Charles **Collins**, Budget Manager  
Donna **Coté**, Budget Manager  
Susan **Paul**, Debt Manager

Peggy **Bowen**, Financial Analyst  
Mary **Cox**, Financial Analyst  
Cheryl **Dyer**, Financial Analyst  
Kirk **Gagnard**, Financial Analyst  
Peggy **LeBeau**, Financial Analyst  
Sheila **McGaughey**, Financial Analyst  
Cheryl **O'Kelley**, Financial Analyst

Linda **Hayes**, Budget Assistant

### economic analysis division

Alfie **Meek**, PhD, Director  
Candice **McKie**, Program Analyst

## Government Finance Officers Association Statement



The Government Finance Officers Association of the United States and Canada (GFOA) presented an award of Distinguished Budget Presentation to Gwinnett County, Georgia for its annual budget for the fiscal year beginning January 1, 2008.

In order to receive this award, a governmental unit must publish a budget document that meets program criteria as a policy document, as an operations guide, as a financial plan, and as communications device.

The award is valid for a period of one year only. We believe our current budget continues to conform to program requirements, and we are submitting it to GFOA to determine its eligibility for another award.

## history



Covering 437 square miles of frontier land the Creek and Cherokee Indians ceded to the state, Gwinnett County was named after Button Gwinnett, one of Georgia's three signers of the Declaration of Independence. The Georgia Legislature created Gwinnett County on December 15, 1818.

In 1819, the home of Elisha Winn, one of Gwinnett's early leaders instrumental in the creation of the county and in whose parlor the early planning took place, became the first county courthouse. The first elections were held in the parlor, and superior court proceedings were conducted in his barn, while the first jail stood nearby. Winn selected Lawrenceville as the site for the county seat and donated the land for the first permanent courthouse, which was completed in 1824 for \$4,000. When it was destroyed by fire in 1871, a second courthouse was constructed in 1872, but was torn down in 1884 when it was deemed inadequate. It was finally replaced in 1885 with the building now known as the Historic Courthouse and was used as the county's courthouse until 1988, when the construction on the Gwinnett Justice and Administration Center was completed.

In 1914, a portion of Gwinnett was joined with parts of Walton and Jackson Counties to form Barrow County. More of Gwinnett's land area was lost in the mid-1950s with the construction of Buford Dam. As the Chattahoochee River was backed up behind the new dam, the water of Lake Lanier covered hundreds of acres.

## population

For 2008, Gwinnett's population was an estimated 789,499. Based on projections, Gwinnett is expected to reach over one million by the year 2026.

## public safety

The Department of Corrections is housed in the Comprehensive Correctional Complex, an 800-bed complex that contains 512 beds for medium- and minimum-security state and county inmates. This complex also contains 288 work release program beds for non-violent criminal offenders and parents who fail to pay court-ordered child support.

Gwinnett County's Department of Police Services is a nationally accredited agency with an authorized strength of 788 sworn officers, supported by 313 non-sworn officers providing law enforcement services to the county. The Police Annex/E-911 center, currently under construction, will open in early 2010.



Gwinnett County's Department of Fire and Emergency Services covers one of the largest demographic areas in the state of Georgia. Serving this area with fire protection and emergency medical services is the mission of the department. The department meets its challenge with an authorized force of 838 well-trained men and women who are proactive in their approach to the challenges and citizen-oriented in their focus. Fire Station 28 near Loganville opened in June 2008. Fire Station 29 near Braselton and relocations for Fire Station 7 in Duluth and Fire Station 18 in Hamilton Mill are currently under construction.

## transportation

Gwinnett's infrastructure includes more than 2,750 miles of roads, which include more than 643 signalized intersections. The 2009 Capital Budget and 2010 – 2014 Plan for the Transportation Capital Improvement Program (CIP) totals \$300 million.

The new state-of-the-art Traffic Control Center (TCC) opened in mid-2008. The TCC is staffed during peak travel times to monitor traffic flow and to assist in making any





adjustments on the system. The TCC is able to communicate with over 400 of the signals and communicates with over 50 CCTV. In 2009, the new traveler information system via the web and television will be implemented.

Briscoe Field is the fourth busiest airport in the state, located on approximately 500 acres. It is capable of handling all light, general aviation and most corporate jet aircraft. Two fixed base operators provide excellent service and three flight schools provide instruction. A security fence was installed along the perimeter in 2008.

Gwinnett County Transit operates local bus service Monday through Saturday. Forty-eight Express Buses operate weekdays during peak travel times. The five express routes allow individuals to park their cars at central locations and take transit to destinations in downtown Atlanta. In 2008, the Transit system transported more than two million people on express and local buses.

## education

Gwinnett County Public Schools is the largest school system in Georgia and the 15<sup>th</sup> largest school system in the country with a growth rate of 4,000 new students each year. Total enrollment for 2008 – 2009 was just under 160,000 which includes 69 elementary schools, 21 middle schools, 17 high schools, and 10 alternative education centers. The average cost to educate a student is \$8,156 per year. Gwinnett's school system serves approximately 159,949 meals daily and operates over 1,700 school buses that travel more than 23 million miles annually, and transport an average of 120,000 students twice daily. In fiscal year 2009, its total operating budget is \$1.859 billion dollars.

There are more than 35 private schools in Gwinnett, and the City of Buford operates its own public school system.

Gwinnett is also home to several universities, such as DeVry Institute of Technology, Shorter College, Gwinnett Technical College, Georgia Perimeter College (partnered with the University of Georgia), and Georgia Gwinnett College.

Georgia Gwinnett College opened its doors as a four-year college in fall 2007. Prior to that, the College only offered a two-year associate degree. The first Georgia Gwinnett College graduation was held May 2008. By 2010, enrollment is estimated to be 8,000.

In May 2008, The University of Georgia moved its Gwinnett programs from the campus it currently shares with Georgia Gwinnett College to its new location near Sugarloaf Parkway and I-85. Although the last class of UGA undergraduates students in Gwinnett graduated in the spring of 2008, enrollment in the graduate programs continues to expand, as well as the number of programs offered. Last summer UGA launched its first PhD program in Counseling Psychology.



Established in 1935, the Gwinnett County Library System has grown to 14 full-service branches. Construction on the Hamilton Mill Branch Library began in 2008. It will be the 15<sup>th</sup> branch library and the County's third green building. The library is scheduled to open in the winter of 2010.

## business environment

### Gwinnett County Top 10 Major Employers

Company	Employees
Gwinnett County Public School System	20,750
Gwinnett County Government	4,991
Gwinnett Health Care System	4,198
Wal-Mart	3,593
Publix*	2,897
United States Postal Service	2,301
State of Georgia	2,167
Kroger*	1,904
Scientific Atlanta, a Cisco Company	1,863
Primerica	1,700

*\*Based on full-time equivalent (FTE)*

*Source: Calls to individual companies – March 2009*

Gwinnett County has maintained its AAA rating from all three major credit rating agencies since 1997. In 2008, \$237.5 million in revenue bonds were issued, which includes \$190 million in water and sewer revenue bonds. The County's favorable rating indicates solid financial management and results in significant interest savings for our citizens.

Gwinnett County issued 25,034 occupation tax certificates (business licenses) in 2008. Gwinnett's hospitality and international sophistication, along with affordable real estate and a well-educated labor pool, continues to attract a comprehensive array of diverse companies.

The retail market in Gwinnett offers citizens the choice of Gwinnett Place Mall, the Mall of Georgia, or Discover Mills, each bringing a different type of shopping experience to Gwinnett.

In 1984, Gwinnett Place Mall became the first mall in Gwinnett and is located at I-85 and Pleasant Hill Road. With anchor stores of Macy's, JCPenney, Sears, and Belk. Gwinnett Place has over 145 stores.

The Mall of Georgia opened in 1999 and is located on Highway 20 near Buford. The mall is anchored by several major retailers such as Macy's, Dillard's, Nordstrom, JCPenney, Belk, and Dick's Sporting Goods. It encompasses more than two million square feet, has more than 220 shops, a 20-screen movie theatre with IMAX 3-D, and a village area with an interactive fountain and outdoor pavilion, which is used for free concerts and other events for patrons to enjoy throughout the year.

Discover Mills opened in November 2001 and is located at the junction of I-85/Highway 120 and Sugarloaf Parkway. It is a 1.1 million-square-foot, market-dominant retail and entertainment destination featuring 15 anchors, including Bass Pro Shop's Outdoor World and Last Call from Neiman Marcus. There are also over 170 specialty retailers, as well as a variety of theme restaurants, casual dining, and cutting-edge entertainment venues such as Jillian's, Woodward Skatepark, an 18-screen movie theater, and the Medieval Times dinner theater.

## recreation and arts



The Operations Division of Gwinnett Parks and Recreation offers something for everyone from taking a yoga class, learning how to make pottery, or joining in a pick-up basketball game. They also manage facility rentals and work with Gwinnett's 23 youth athletic associations to offer sports like baseball/softball, basketball, cheerleading, football, soccer, roller hockey, flag football, lacrosse, and other youth sports. In 2008, the division offered over 6,259 classes, summer camps, and special events.

Gwinnett Parks and Recreation operates 34 parks and facilities that include 150 athletic fields, 42 tennis courts, 18 multi-purpose sports courts, 17 swimming pools, five dog park areas, trails, outdoor skate complexes, playgrounds, picnic areas, pavilions, fishing lakes, and more. In 2008, Lucky Shoals Park Community Recreation Center and Gymnasium, West Gwinnett Park and Aquatic Center, Peachtree Ridge Park and Rock Springs Park opened. In addition, several new parks are currently under design or construction.

Gwinnett County continues to place a high priority on greenspace acquisition and its park construction program. As of 2008, the total parkland acreage grew to over 8,600 acres for both passive and active parks.

The Gwinnett Center consists of a convention center, 702-seat performing arts center, 13,000-seat arena, and a grand ballroom. Beautiful landscaping and on-site parking make a visit to any of these facilities enjoyable.

A 50,000-square-foot exhibit hall anchors the Convention Center. This facility also has 23 meeting rooms that can accommodate up to 1,000 attendees. The Grand Ballroom is also located in the Convention Center and is a spacious 21,600 square feet.



The Arena is home to the Gwinnett Gladiators of the East Coast Hockey League and the Georgia Force, arena football's 2007 Southern Division Champions. Included in the design are 36 corporate suites, wider seats, high-end sound, and versatile lighting. This facility can be a venue for Broadway shows, sporting events, music concerts, and many other types of entertainment.

A \$19 million parking deck is currently under construction that will provide a three-tiered parking structure and 950 spaces for Arena patrons.

The AAA Braves Baseball affiliate is moving from Richmond, Virginia, and will call Gwinnett County its home in time for the 2009 season. Construction began in 2008 on a \$64 million state-of-the-art stadium. The stadium will seat over 10,000 fans and will be completed in March 2009.

## healthcare

Gwinnett Medical Center is a not-for-profit healthcare network offering facilities and services to Gwinnett and the surrounding community. Its 500-bed system includes two hospitals plus supporting facilities anchored by its flagship campus in Lawrenceville. Systemwide, there are over 4,000 associates and 800 affiliated physicians representing more than 50 specialty healthcare fields.



Gwinnett Medical Center's Lawrenceville campus is the flagship facility, which includes Gwinnett Day Surgery; the Emergency Department, including a Level II Trauma Center; the Center for Sleep Disorders; the Women's Pavilion that includes a high-risk pregnancy unit; the Marion Allison Webb Center for screening mammography, breast health education, and resource center; a center for orthopedics; an expanded laboratory; a center for neuroscience; an outpatient imaging center; Extended Care Center; and the Center for Gastrointestinal and Pulmonary Endoscopy. This campus currently has 175 beds but will add 129 more in fall 2009 with the opening of the North Tower.

Gwinnett Medical Center – Duluth is an 81-bed hospital campus in Duluth. It includes the latest state-of-the-art technology and is the first all-digital hospital in the north metro Atlanta area.

Other facilities in the Gwinnett Medical Center include GMC Imaging Center – Hamilton Mill (Dacula) and the Glancy Campus (Duluth).

Other facilities in the Gwinnett Hospital System include the Gwinnett Extended Care Center, which provides nursing home care and transition between hospital and home care, and Summit Ridge, a center for psychiatry and addiction medicine.

Serving the area since 1980, the Emory Eastside Medical Center in Snellville is a 231-bed full-service hospital, which includes a pediatric urgent care unit, day surgery, obstetrics, breast health center, and an in-patient physical rehabilitation center. The Eastside Heritage Center, located at the original hospital campus on Fountain Drive, specializes in the caring and treatment of many adult conditions. The center includes programs for senior mental health, wound care, sleep disorders, and pain management.

Gwinnett County Health and Human Services supports the needs of residents through coordination with private and public organizations. It participates in the planning of the Gwinnett Coalition for Health and Human Services, provides services to Gwinnett's senior citizens, develops and manages one-stop service centers, and manages County funding for nonprofit and other governmental organizations. Numerous health centers throughout Gwinnett County offer medical care to residents who meet income and eligibility requirements.

## government

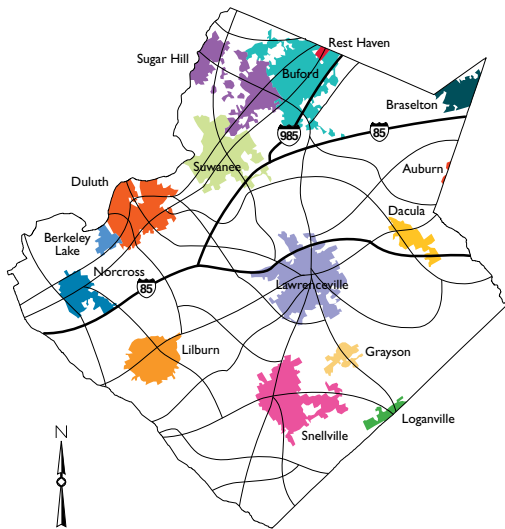


Built in 1885 and renovated in 1992, the Historic Courthouse is located on the square in downtown Lawrenceville and is open for tours Monday through Friday. County offices were housed in this facility until 1988. This building serves as a public museum and meeting facility for citizens and civic organizations. The annual lighting of the tree at Christmas, the Moonlight and Music Summer Concert Series, and many other festivals are held here during the year.

Governed by a five-member Board, Gwinnett's local government is composed of a chairperson elected at-large and four commissioners elected by district for four-year terms. The chairperson appoints the County Administrator, who oversees 12 executive departments.

While most county government operations are located in the Gwinnett Justice and Administration Center (GJAC), some departments are now located in the Annex Building, One Justice Square, and the Recorder's/Juvenile Court facility. As relocations and additions occur, the existing facilities undergo reconfigurations to better meet residents' needs.

## municipalities



*Spanning 437 square miles, Gwinnett County has 15 municipalities within its boundaries. In 2008, there were an estimated 789,499 people calling Gwinnett home.*

POPULATION – July 1, 2007 Estimate <i>(Source – U.S. Census Bureau)</i>	
Auburn	306 *
Berkeley Lake	2,064
Braselton	680 *
Buford	11,148 *
Dacula	4,636
Duluth	25,953
Grayson	1,471
Lawrenceville	28,969
Lilburn	11,526
Loganville	2,539 *
Norcross	10,490
Rest Haven	106 *
Snellville	20,076
Sugar Hill	16,725
Suwanee	14,878

\* Population within Gwinnett County

**Auburn** – Located on US Highway 29 between Lawrenceville and Athens, Auburn became a part of Gwinnett County in 1988, when it annexed 2,500 acres.

**Berkeley Lake** – Established in 1956, Berkeley Lake is located near the Chattahoochee River and is mostly residential with wooded lots and rolling hills.

**Braselton** – Settled in 1876, part of this municipality is located within Gwinnett where property was annexed in 1989. It also extends into Barrow, Hall, and Jackson counties.

**Buford** – Buford is Gwinnett’s northernmost city with a small portion of the city in Hall County. It was founded in 1872 and originally developed as a railroad town.

**Dacula** – Founded in 1891, a branch of the Seaboard Coastline Railroad was constructed from Dacula through Lawrenceville to Duluth. Elisha Winn was one of Gwinnett’s early leaders and his home served as a temporary first courthouse.

**Duluth** – In the early 1800s, this was a part of Cherokee Indian territory, but in 1821 was developed as the town of Howell Crossing. In 1873 the town name was changed to Duluth following completion of the railroad.

**Grayson** – An area of rolling pastures and small farms, Grayson was founded in 1880. Previously known as Berkely, it is another city given birth by the railroad.

**Lawrenceville** – Lawrenceville is the largest city in Gwinnett. Incorporated in 1821, it is the second oldest city in metro Atlanta and is the county seat.

**Lilburn** – In 1892 it was a railroad stop known as the town of McDaniel; it was changed to Lilburn in the early 1900s and named after Lilburn Trigg Myers who was the general superintendent for the Seaboard Airline Railway.

**Loganville** – This town also started as a branch of the railroad in 1898 and is another city that Gwinnett shares with an adjoining county.

**Norcross** – The second oldest city in Gwinnett, Norcross was founded as a resort town for wealthy Atlantans. Chartered in 1870, Norcross has an area of 112 acres and is listed in the United States Register of Historic Places.

**Rest Haven** – Incorporated in 1940, one of the newest cities in Gwinnett and is only a mile and a half wide.

**Snellville** – In 1885, Snellville was founded by Thomas Snell and James Sawyer and is located on US Highway 78 in the southeastern corner of the county.

**Sugar Hill** – This town’s name came from a freight wagon traveling down a steep hill in the 1800s that spilled its load of sugar all over the hill, becoming “Sugar Hill.” The city was chartered in 1939.

**Suwanee** – Beginning as an Indian village and later serving as a railroad stop, Suwanee was officially founded in 1837 with the establishment of the post office.

This page intentionally left blank