

**Gwinnett County Fire and Emergency Services
Department Comparisons**

<i>Department</i>	<i>Population</i>	<i>Square Mileage</i>	<i># of Stations</i>	<i>Budget (Millions)</i>	<i># of Personnel</i>	<i>Battalions</i>	<i>Medic Units</i>	<i>Ladder Trucks</i>	<i>Engines</i>
Gwinnett	800,000	437	28	70	750	4	23	8	28
Orange County, FL	1,100,000	907	41	186.7	1183	6	30	4	41
Portland, OR	568,000	152	30	87.6	756	4	0	9	30
San Antonio, TX	1,300,000	466	50	203.4	1600	7	31	19	49

<i>Department</i>	<i>Year of Statistics</i>
Gwinnett	2009-2010
Orange County, FL	2009-2010
Portland, OR	2008-2009
San Antonio, TX	2008

**Gwinnett County Fire and Emergency Services
Department Comparisons**

<u>Population</u>			
Gwinnett 800,000	Orange County (FL) 1,100,000	Portland, Oregon 568,380	San Antonio, Texas 1,300,000

<u># of Stations</u>			
Gwinnett 28	Orange County (FL) 41	Portland, Oregon 30	San Antonio, Texas 50

<u>Land Square Mileage</u>			
Gwinnett 437	Orange County (FL) 907	Portland, Oregon 151.6	San Antonio, Texas 466

<u>EMS Revenue</u>			
Gwinnett	Orange County (FL)	Portland, Oregon	San Antonio, Texas

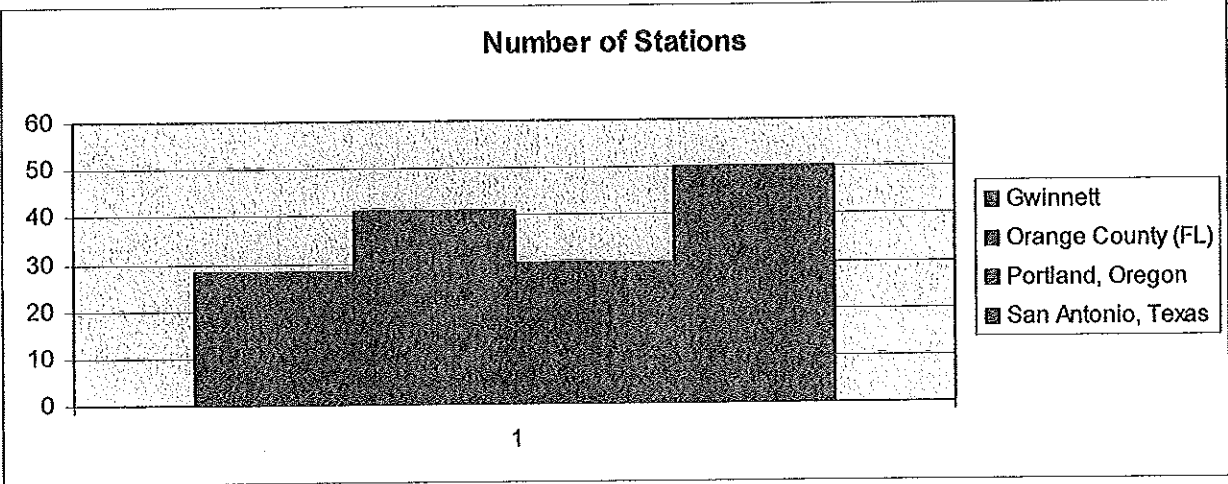
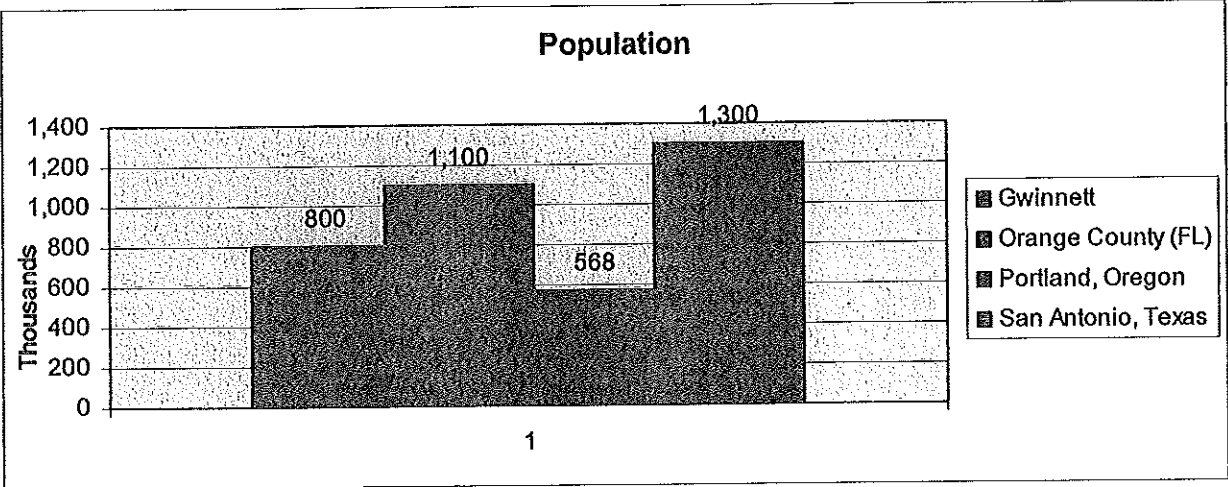
<u>Budget (Millions)</u>			
Gwinnett 70	Orange County (FL) 186.7	Portland, Oregon 87.6	San Antonio, Texas 203.4

<u>Personnel - 2009</u>			
Gwinnett 750	Orange County (FL) 1183	Portland, Oregon 756	San Antonio, Texas 1600

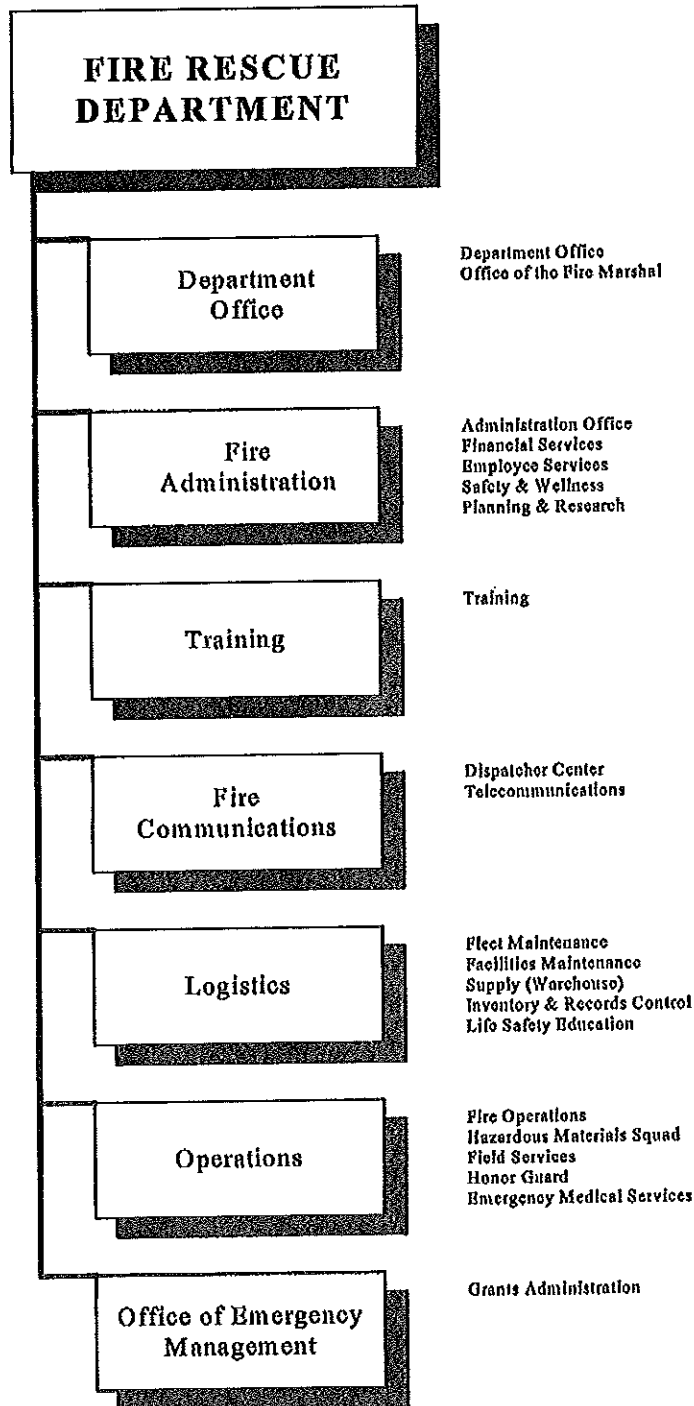
Gwinnett	2009-2010
Orange County	2009-2010
Portland, OR	2008-2009
San Antonio, TX	2008

	Population	Square Mileage	# of Stations	Budget (Millions)	# of Personnel
Gwinnett	800,000	437	28	70	750
Orange County, FL	1,100,000	907	42	186.7	1183
Portland, OR	568,000	152	30	87.6	756
San Antonio, TX	1,300,000	466	50	203.4	1600

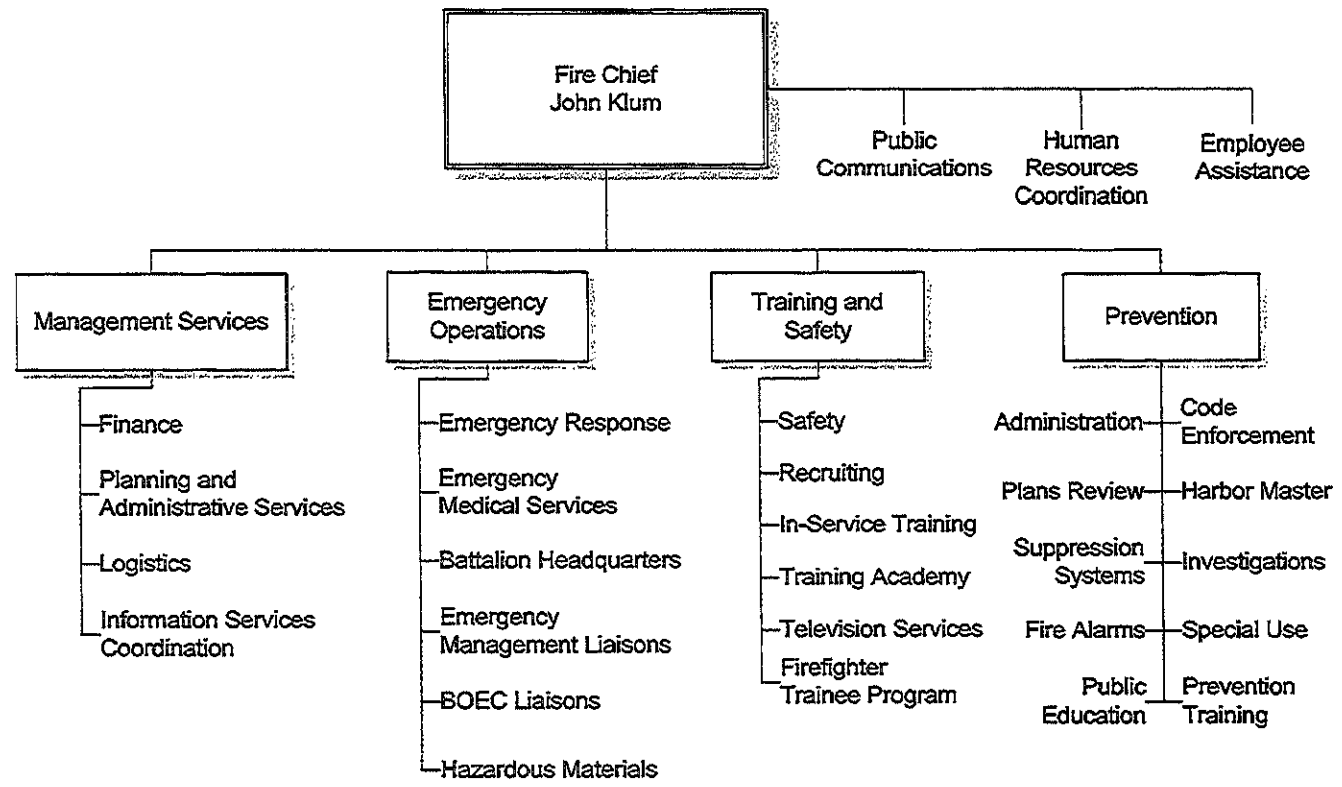
Gwinnett County Fire and Emergency Services Department Comparisons



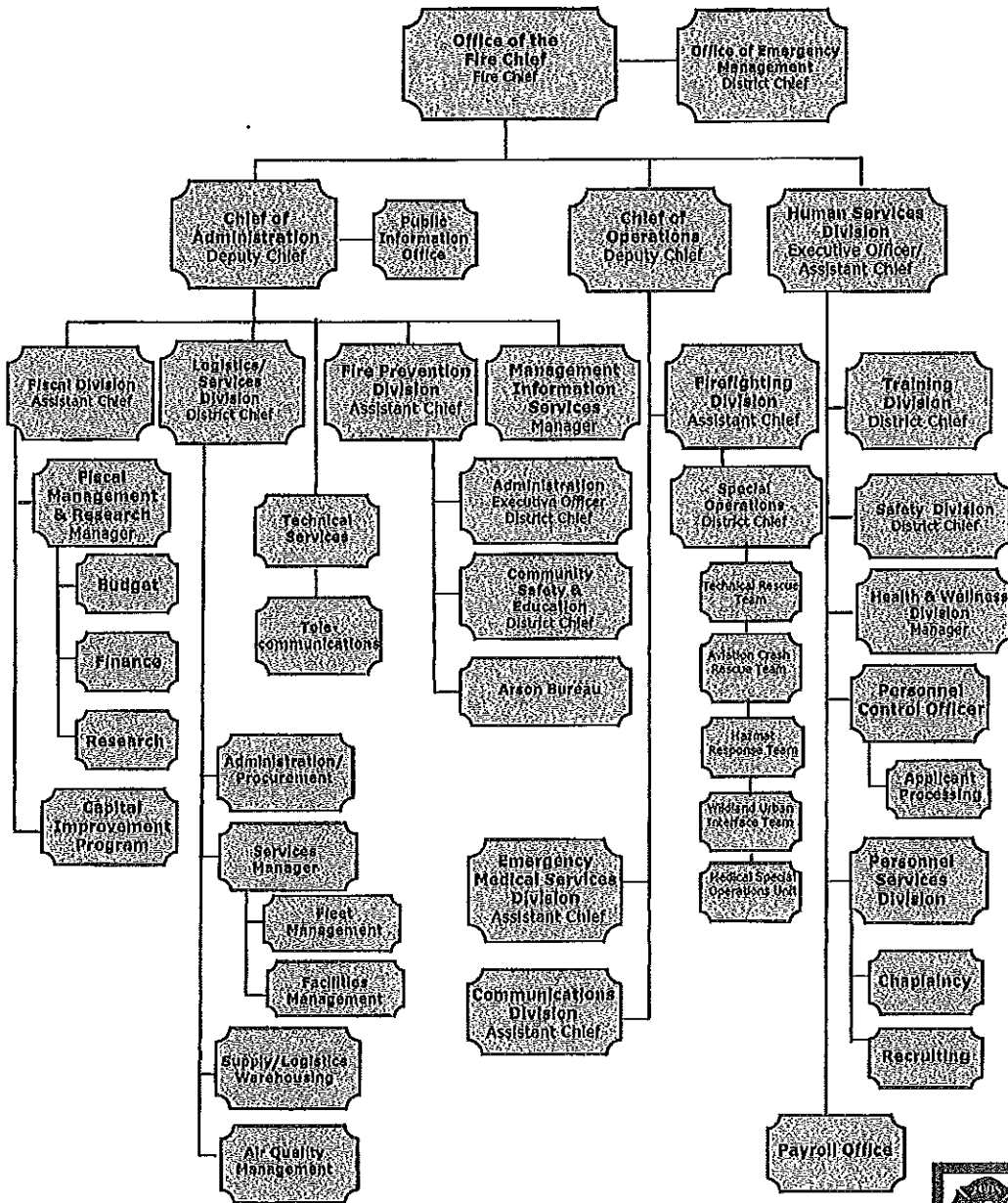
Orange County FD



Portland Fire & Rescue



ORGANIZATIONAL CHART 2008



ANNUAL REPORT 2008



CITY OF SAN ANTONIO FIRE DEPARTMENT

Gwinnett County Fire and Emergency Services Gwinnett – Metro Comparison

	Gwinnett	*Cobb	**Dekalb	Atlanta	***Clayton
Firefighters	715	918	842	903	421
Stations	28	41	28	33	19
Square Miles	437	305	267	132	142
Population	800,000	664,700	718,400	464,200	275,500
Firefighters per 1000	0.89	1.38	1.17	1.95	1.53

*Includes Cobb, Austell, Marietta and Smyrna Fire Departments

**Includes Dekalb and Decatur Fire Departments

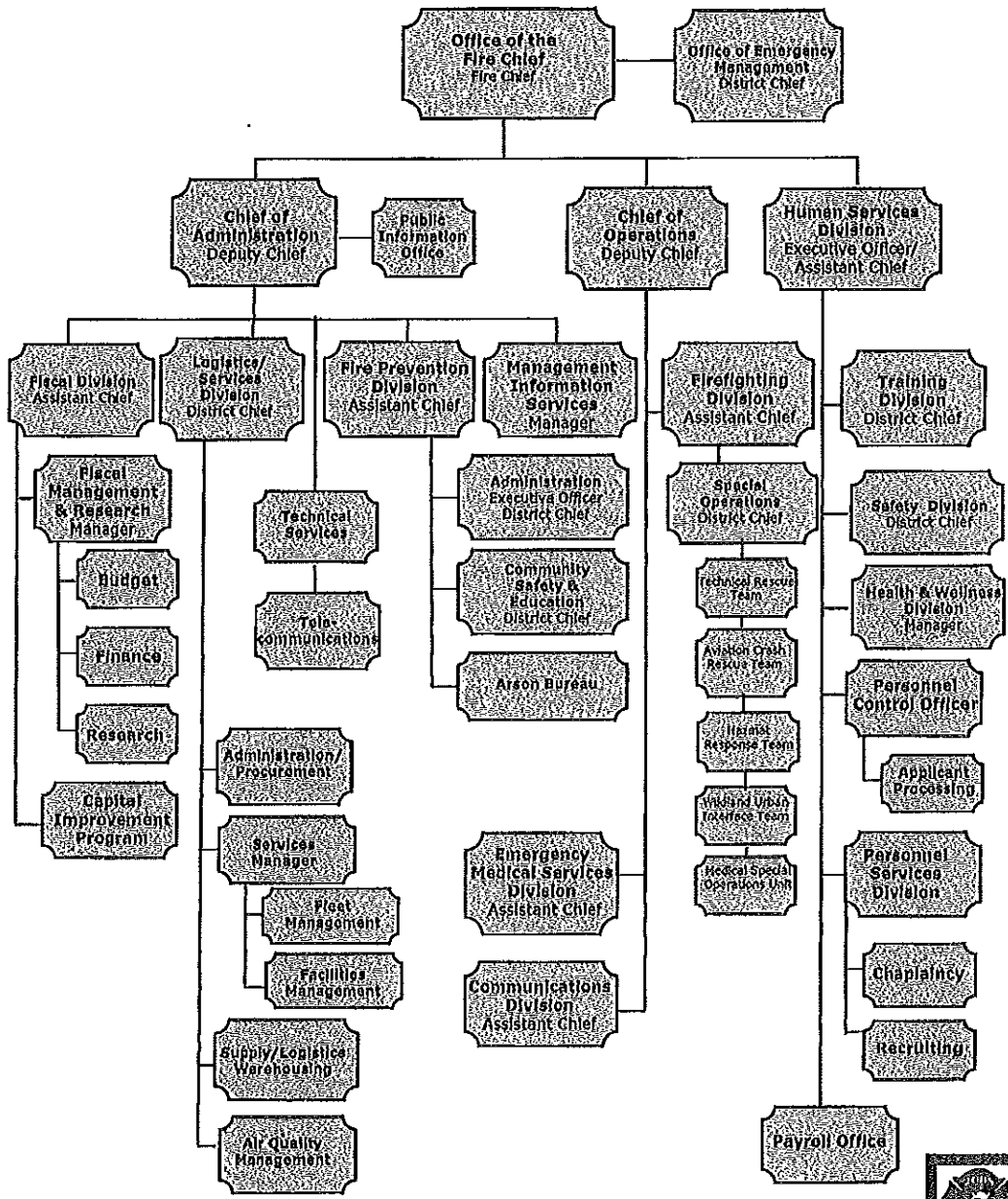
***Includes Clayton, Riverdale, Forest Park, and Morrow Fire Departments

	Square Miles	Population	Budget	Revenue*	Adjusted Budget
Cobb	305	664,700	\$90,645,747	0	\$90,645,747
Dekalb	267	718,400	\$78,891,280	\$4,500,000	\$74,391,280
Atlanta	132	464,200	\$96,500,000	\$11,000,000	\$85,500,000
Clayton	142	275,500	\$38,711,943	\$7,005,000	\$31,706,943
Gwinnett	436	800,000	\$70,000,000	\$10,000,000	\$60,000,000

*Cobb does not have revenue because they do not provide EMS transport. Cobb also provides a subsidy of \$581,863 to the private ambulance companies. Atlanta includes budget and revenue from Grady EMS. Dekalb and Clayton provide Fire Department EMS transport.

	Response Times	Cost per Citizen	Cost per Sq. Mile	Number of Stations	Average Station per Square Mile
Cobb	5	\$136	\$297,199	41	7.44
Dekalb	5.44	\$104	\$278,619	28	9.54
Atlanta	5 min 90% of time	\$184	\$647,727	33	4.00
Clayton	5	\$115	\$223,288	19	7.47
Gwinnett	6 min 50% of time	\$75	\$137,615	28	15.57

ORGANIZATIONAL CHART 2008



ANNUAL REPORT 2008



CITY OF SAN ANTONIO FIRE DEPARTMENT

Cobb County Fire and Emergency Services

Director of Public Safety
G.M. Lloyd

Fire Chief
Sam Heaton

Admin Spec III	Fire Investigations
Services Coordinator	Resource Office
Public Relations Officer	Internal Affairs
Information Services	EMA Linson

Preparedness
Deputy Chief Randy Crider

Admin Spec II	Hiring
Health and Safety	Contingency Planning

Response
Deputy Chief Bob Foran

Admin Spec II	Field Hydrant Inspections
Safety Review Board	

Training
Division Chief Stoney Bowles

Admin Spec II	Special Ops Trng
EMS Trng Prog Mgr	Promotional Exams
Occup. Health & Safety	

Training Captain
Captain Chuck Baird

Training Lt	Training Lt
Training Lt	Training Lt

Safety Village / Public Fire and Life Safety Education

Pre-K Programs	Recruiting
K, 2nd, and 4th Grade Programs	Juvenile Firesetter Program
Safety Village Programs	Commercial Fire Safety

Apparatus Maintenance

Facilities Maintenance

Construction Project Liaison

Lt Adjutant

Field Supply

Air Lab

Mail Svc. Tech

Firefighter II

Fleet Assets

Pre-Incident Planning

Emergency Operations

Battalion 1
A Shift B Shift C Shift

Battalion 2
A Shift B Shift C Shift

Battalion 3
A Shift B Shift C Shift

Battalion 4
A Shift B Shift C Shift

Special Ops

Hazardous Materials Team

Technical Rescue Team

Medical Operations

Special Operations
Division Chief Spencer Miller

Admin Spec II	Lt Adjutant
Firefighter III	Firefighter III

Bio Medical Equipment

Pharmacy

EMS Equipment Management

Technical Operations Mgmt

HazMat Program Mgmt

Special Events Program Mgmt

EMS PAD Program

Special Projects

EMS Equipment Management

EMS Service Director

Medical Operations Mgmt

Infection Control Officer

Fire Marshal
Division Chief Tom Simler

Admin Spec II	Admin Spec II
Admin Tech (PT)	
Codes and Ordinances	Code Interpretation

Deputy Fire Marshal

Environmental Fire Hazards

Flammable Liquids Storage Tanks

Pyrotechnics

Ordinance Maintenance

Outdoor Burning Code Enforcement

New Inspections

Sprinkler Inspections

Plan Review

Existing Inspections

Hydrant Program

Work Order Coordinator

Hydrant Tagging